

<i>CONSONANTI</i>	p	b	p ^h	b ^h	p'	β	p ^w	ϕ	β	f	v	t	d	t ^h	d ^h	t'	d'	θ	ð	s	z	ṭ	ḍ	
Tratti principali [Consonantico] [Sonorante]	+	+	+	+	+	+	+	+	+	+	+	+	+	+	+	+	+	+	+	+	+	+	+	+
Tratti di costrizione [suzione] [continuo] [stridulo] [laterale]	-	-	-	-	-	-	-	-	-	-	-	-	-	-	-	-	-	-	-	-	-	-	-	-
Palato molle [nasale]	•	•	•	•	•	•	•	•	•	•	•	•	•	•	•	•	•	•	•	•	•	•	•	•
Radice lingua [radice lingua arretrata] [radice lingua avanzata]																								
Laringe [corde vocali rigide] [glottide allargata] [glottide ristretta]	•	•	•	•	•	•	•	•	•	•	•	•	•	•	•	•	•	•	•	•	•	•	•	•
Lamina lingua [anteriore] [distribuito]												•	•	•	•	•	•	•	•	•	•	•	•	•
Labbra [arrotondato]	•	•	•	•	•	•	•	•	•	•	•													
Corpo lingua [posteriore] [alto] [basso]																								

• = articolatore attivo, [+/-tratto] = comportamento dell'articolatore.

<i>CONSONANTI</i>	ʃ	ʒ	ʈ	ɖ	c	ɟ	ç	ʒ	k	g	k ^h	g ^h	k'	g'	x	ɣ	q	ɠ	χ	ʁ	ɦ	ʕ	
Tratti principali [Consonanti co] [Sonorante]	+	+	+	+	+	+	+	+	+	+	+	+	+	+	+	+	+	+	+	+	+	+	+
Tratti Restrizione [suzione] [continuo] [stridulo] [laterale]	-	-	-	-	-	-	-	-	-	-	-	-	-	-	-	-	-	-	-	-	-	-	-
Palato Molle [nasal]	•	•	•	•	•	•	•	•	•	•	•	•	•	•	•	•	•	•	•	•	•	•	•
Radice Lingua [rd. lingua arretr.] [rd. lingua avanz.]																		•	•	•	•	•	•
Laringe [corde vocali rigide] [glottide allargata] [glottide ristretta]	•	•	•	•	•	•	•	•	•	•	•	•	•	•	•	•	•	•	•	•	•	•	•
Lamina lingua [anteriore] [distribuito]	-	-	-	-	-	-	-	-	-	-	-	-	-	-	-	-	-	-	-	-	-	-	-
Labbra [arrotondato]																							
Corpo Lingua [posteriore] [alto] [basso]							•	•	•	•	•	•	•	•	•	•	•	•					

<i>CONSONANTI</i>	m	n	ɲ	ŋ	l	ʎ	ʟ	r	y	w	h	?
Tratti principali [Consonanti col] [Sonorante]	+	+	+	+	+	+	+	+	-	-	-	-
Tratti di restrizione [suzione] [continuo] [stridulo] [laterale]												
	-	-	-	-	-	-	+	+	-	-	+	-
	-	-	-	-	-	-	+	-	-	-	-	-
	-	-	-	-	+	+	+	-				
Palato Molle [nasale]	•	•	•	•	•	•	•	•	•	•		
	+	+	+	+	-	-	-	-	-	-		
Radice Lingua [Radice lingua arretrata] [Radice lingua avanzata]												
Laringe [Corde vocali rigide] [Glottide allargata] [Glottide ristretta]	•	•	•	•	•	•	•	•	•	•	•	•
	-	-	-	-	-	-	-	-	-	-	-	-
	-	-	-	-	-	-	-	-	-	-	+	-
	-	-	-	-	-	-	-	-	-	-	-	+
Lamina lingua [anteriore] [distribuito]		•	•		•	•	•	•				
		-	+		+	-	-	-				
		+	-		-	+	+	+				
Labbra [arrotondato]	•								•	•		
	-								-	+		
Corpo lingua [posteriore] [alto] [basso]				•					•	•		
				+					-	+		
				+					+	+		
				-					-	-		

Sindhi:

ḍani 'field'		ḍīnu 'festival'	ḍatu 'illiterate'	ḍānu 'handle'
banu 'forest'	daru 'door'	ḍozru 'you run'	ḍatu 'illiterate' [variant]	ḡuṇu 'quality'
panu 'leaf'	taru 'bottom'	ṭanu 'ton'	caṭu 'to destroy'	kanu 'ear'
ṛ ^h anu 'snake hood'	ṭ ^h aru (district name)	ṭ ^h ag ^h u 'thug, cheat'	c ^h aṭu 'crown'	k ^h anu 'you lift'
b ^h a:ṇu 'manure'	d ^h aṇu 'trunk'	ḍ ^h ag ^h u 'bull'	ṭ ^h aṭu 'a grab'	ḡ ^h anu 'excess'



LAKHOTA:

	Bilabial ↓	Dental ↓	Velar ↓
Ejective ⇒	p'o 'foggy'	t'uʃε 'at all costs'	k'u 'to give'
Voicless unspirated ⇒	payõta 'mallard'	tuwa 'who'	kah 'that'
Voicless + velar fricative ⇒	p ^x a 'bitter'	t ^x awa 'own'	k ^x anta 'plum'

Ewe:

éφá

'he polished'

éfá

'he was cold'

èβè

'Ewe' (the language)

èνè

'two'

éφle

'he bought'

éflé

'he split off'

èβló

'mushroom'

éνló

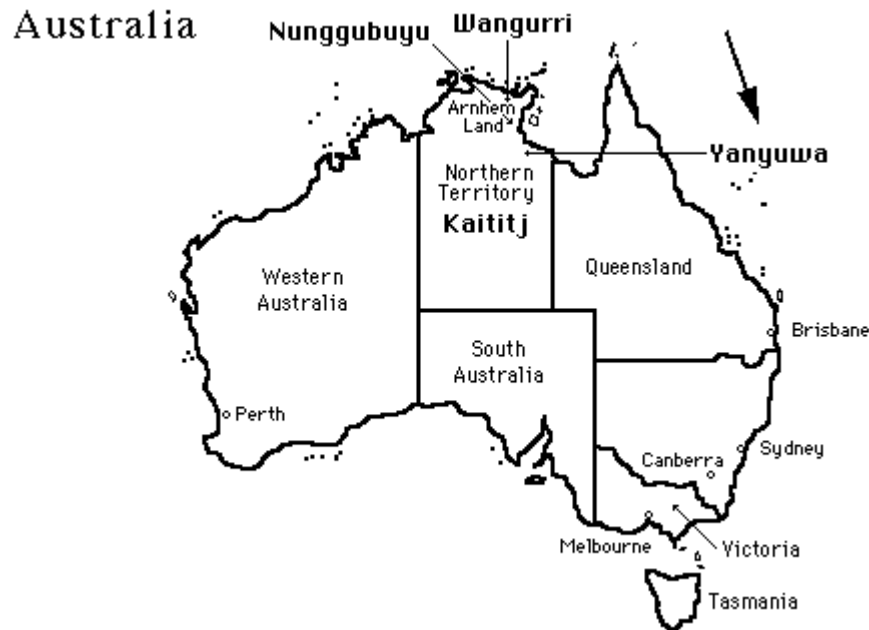
'he is evil'



Yanyuwa

Oral stops

Bilabial	wubuwingu	'for a small female one'
Laminal dental	wuḍurumaya	'laugh!'
Apical alveolar	wuduru	'full of food'
Apical retroflex	wuḍuḷa	'in the stomach'
Palatoalveolar	wuḍuḷa	'into the grass'
Front velar	gugulu	'sacred'
Back velar	wugugu	'grandparent'



Wangurri:

Bilabial
ŋama?
'mother'

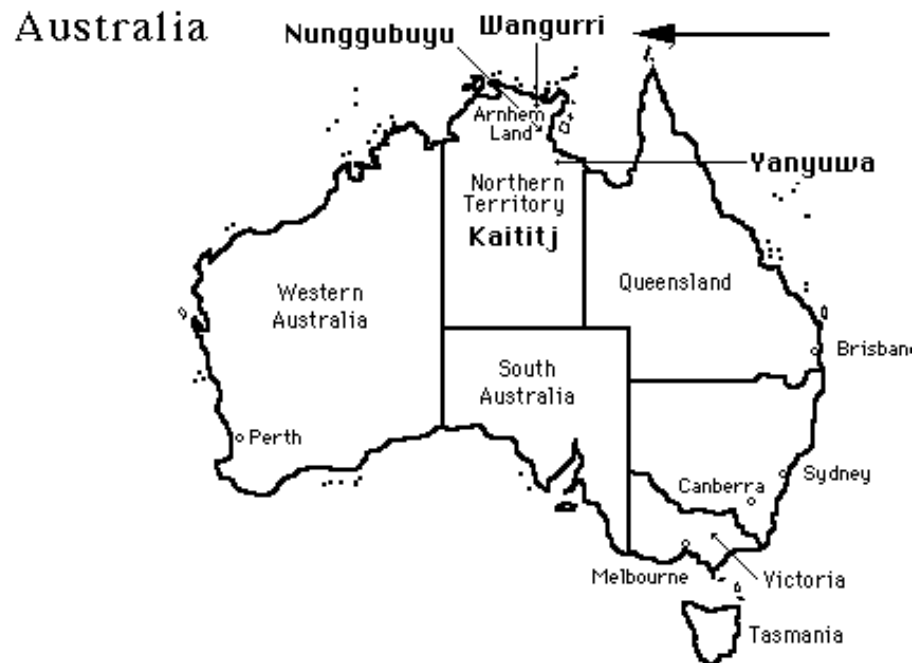
Laminal dental
baŋa
'over there'

Apical alveolar
gaŋa?
'enough'

Apical postalveolar
maŋa
'shark'

Laminal postalveolar
gaŋawu
(species of tree)

Delar
naŋa
'see'



Greek:

Dental

θiki

'box'

ðiki

'trial'

Palatal

çeri

'hand'

jeri

'old men'

Velar

xɔma

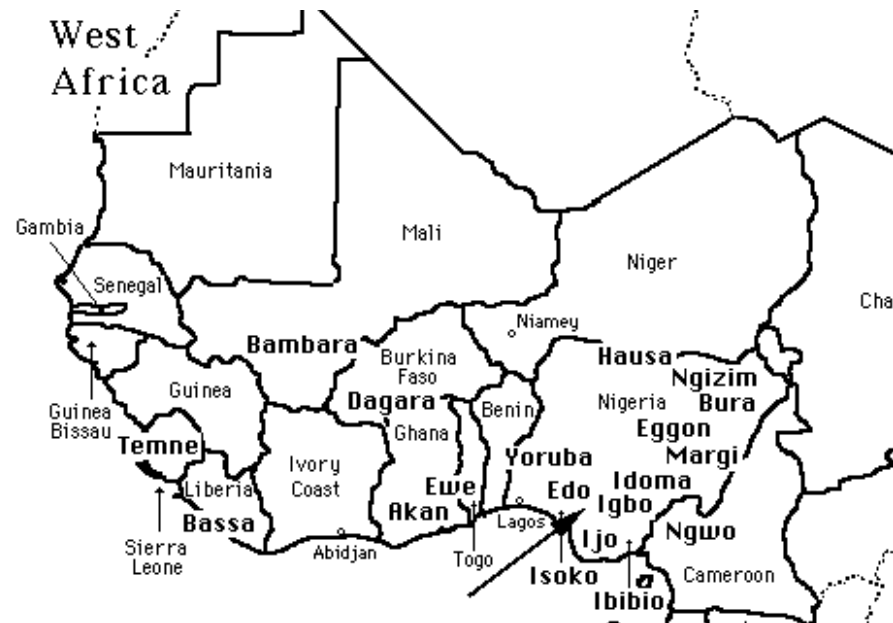
'soil'

ɣɔma

'eraser'

Idoma:

Labial	àpà 'lizard'	àbà 'palm nut'	áma 'bell'
Labial-velar	àk̄pà 'bridge'	àgbà 'jaw'	aŋmàa 'painted body marks'
Velar	àka 'wheel'	àga 'ax'	ɔŋáji 'Western rainbow'
Labialized	ùk ^w ù (tree)	àg ^w a 'swimming'	àŋ ^w à 'fortune-telling instrument'



QUECHA:

	PALATO-ALVEOLAR	VELAR	UVULAR
VOICELESS	tʃaka 'bridge'	kujuj 'to move'	qaʎu 'tongue'
ASPIRATED	tʃʰaka 'large ant'	kʰujuj 'to whistle'	qʰaʎu 'shawl'
EJECTIVE	tʃʼaka 'hoarse'	kʼujuj 'to twist'	qʼaʎu 'tomato sauce'



Hebrew:

	Uvular	Pharyngeal	Glottal
Initial	· χ imia 'chemistry'	ħor 'hole' ʕor 'skin'	hem 'them' ʔor 'light'
Medial	· ma χ ar 'he sold'	naħar 'snored' naʕar 'made a donkey noise'	nahar 'river' ʃaʔon 'noise'
Final	· la χ 'for you' [fem.]	laħ 'humid' naʕ 'moved'	lah 'for her'

AGUL

Voiced pharyngeal fricative

muʕ^ə
'bridge'

muʕar
'bridges'

Voiceless pharyngeal fricative

muħ
'barn'

muħar
'barns'

Voiceless epiglottal fricative

mεH
'whey'

mεHεr
'wheys'

Voiceless epiglottal stop

jaʔ
'center'

jaʔar
'centers'

sεʔ
'measure'

sεʔεr
'measures'



Mid-Waghi:

Laminal dental

a_la a_la

'again and again'

Apical alveolar

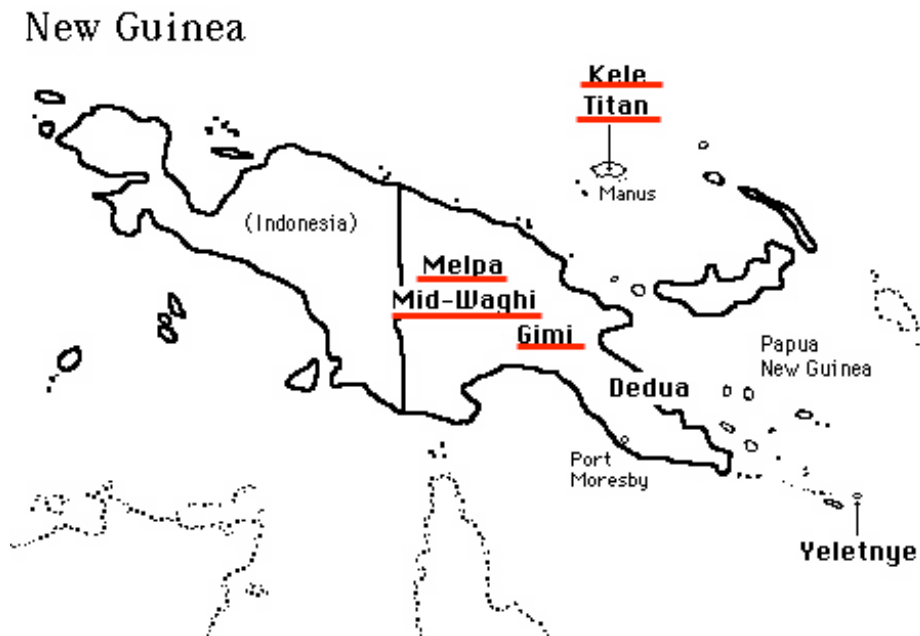
alala

'to speak improperly'

Delar

aLaLe

'dizzy'



NAVAJO:

tota

'not'

hátítsi

'you will speak'

t̲ʃí

'day'

t^xá:ʔ

'three'

ts^hah

'awl'

t^hah

'ointment'

t̲ʃ^ha:ʔ

'beaver'

bik^há:

'its surface'

t'ah

'wait'

ts'ah

'sagebrush'

nift^ha:

'left'

t̲ʃ'ah

'hat'

k'a:ʔ

'arrow'

Turkish

(Istanbul dialect)

kis

'cyst'
(colloq.)

kys

'sulky'

kws

'turn down'
[imper.]

kus

'vomit'
[imper.]

kes

'cut'

køş

'dumb looking'

kos

(island name)

kas

'muscle'

Akan

[+ATR]

[-ATR]

[+ATR]

[-ATR]

s_i

s_i

b_u

b_u

'wash'

'say'

'break'

'get drunk'

wàb_et_u

s_e

ɔw_iá

ɔw_iá

'pull it out'

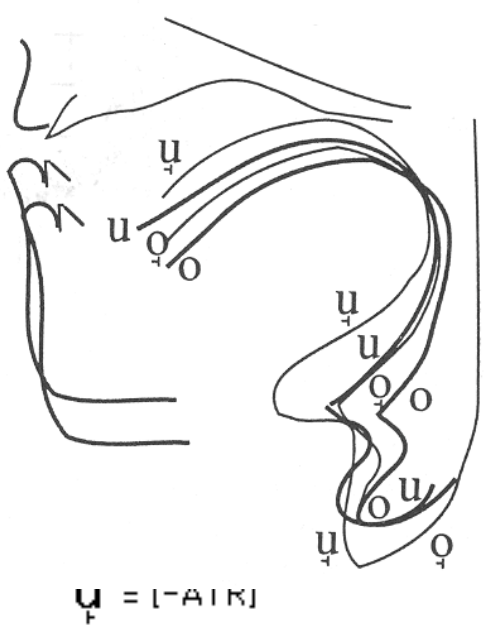
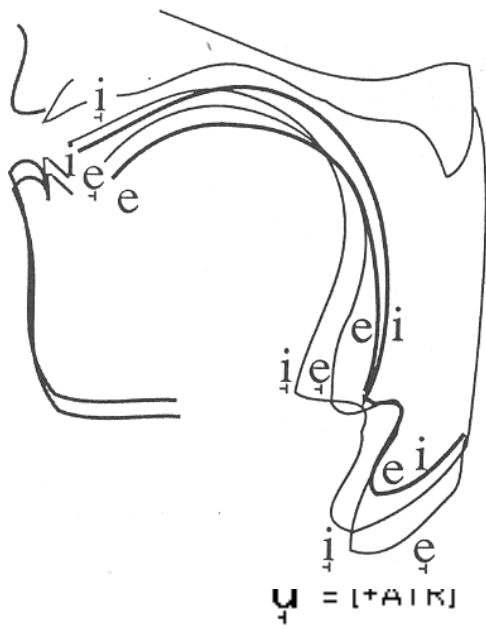
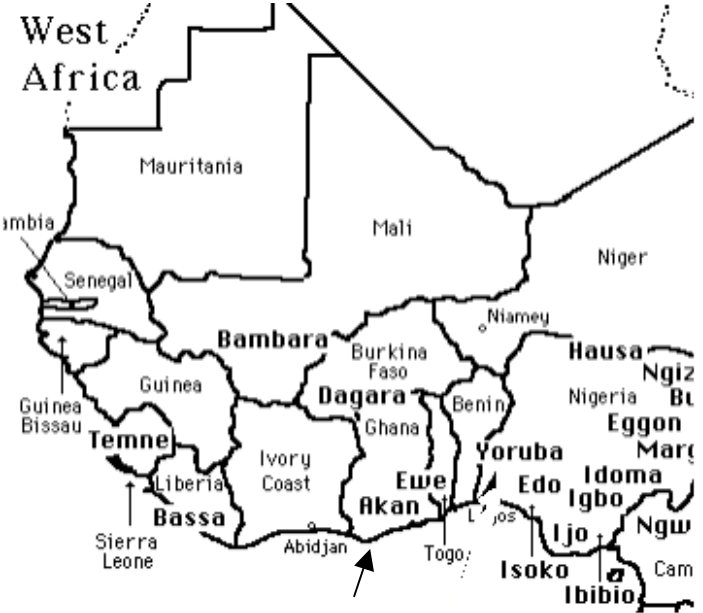
'to resemble'

'he steals'

'he crawls'

s_a

'to cure'



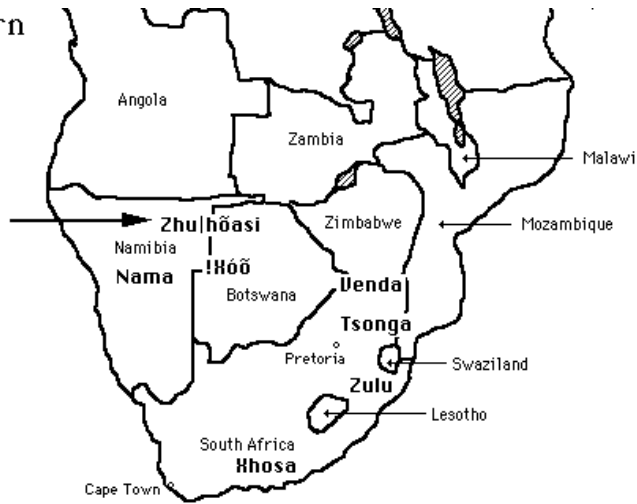
Clicks

Zhu|ǀoasi:

Alveolar click with	-----	
Voiced affricated velar stop	k! ^x árá	'cough up from throat'
Affricated velar ejective	k! ^x ám	'tighten a bowstring'
Voiced velar stop & aspirated velar stop	gk! ^h ání	'tie'
Voiced velar stop & voiceless affricated stop	gk! ^x aré	'cut open an animal'
Voiced velar stop, then affricated ejective	gk! ^x árú	'leopard'
Voiced velar nasal & voiceless aspirated nasal	ŋŋ! ^h àm	'spider'

Alveolar click with	
Voiced velar stop	g!à 'rain'
Voiced unaspirated velar stop	k!ábí 'roll up a blanket'
Aspirated velar stop	k! ^h ání 'palm tree'
Voiced velar nasal	ŋ!àmà 'road'
Voiced aspirated velar nasal	ŋ! ^h ānà 'walking stick'
Voiced velar plus glottal stop	k!ʔàbú 'rifle'

Southern Africa



!Xóǀ

Bilabial	Dental	Alveolar	Palatal	Lateral
θʔôo 'get stuck'	k ʔâa 'die'	k! ^l áã 'be seated'	kʔʔâa 'shoot you'	k ʔâa 'not to be'

Clicks:

